

Internet to WSN Communication

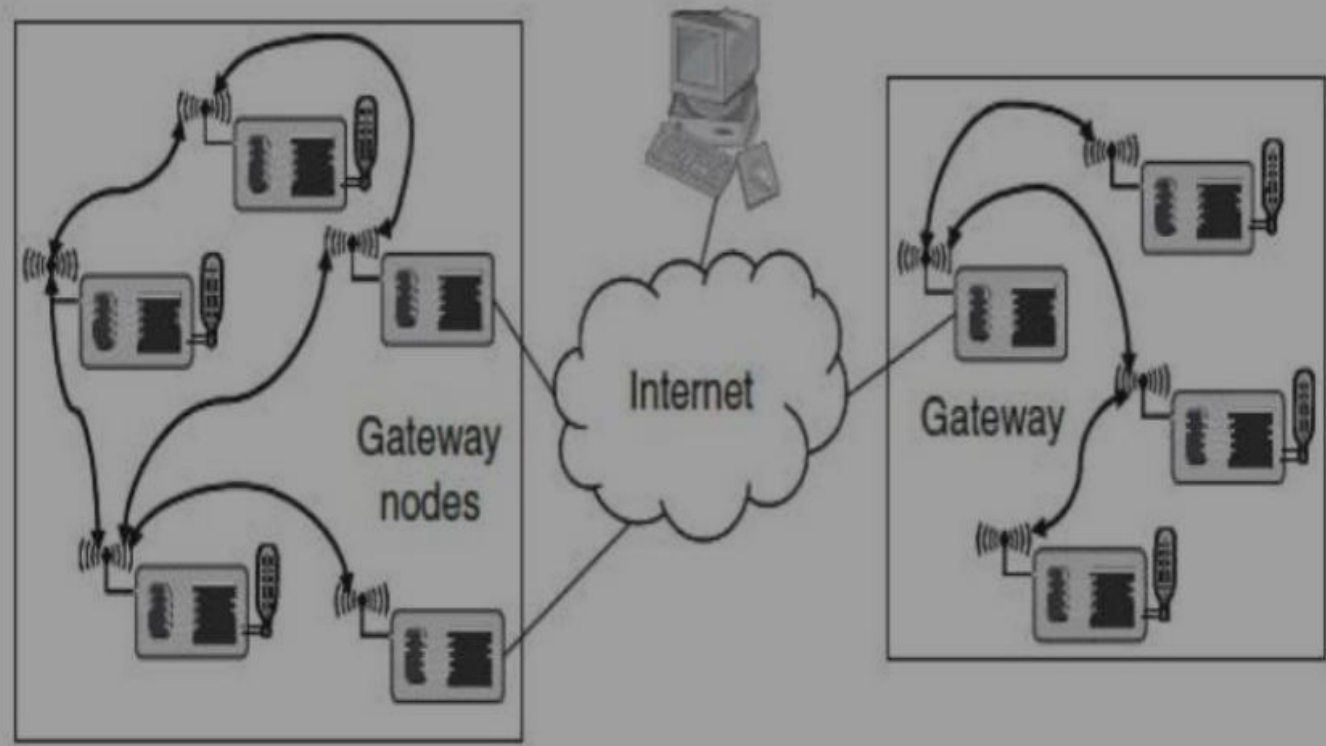
Elementrix Classes

Wireless sensor networks (WSNs) are networks of small, low-power devices that are used to monitor and collect data from the surrounding environment. In order to transmit data from the internet to a WSN, a gateway is typically used to connect the WSN to the internet.

There are several different ways that the internet can communicate with a WSN:

- ❑ **Remote management:** The gateway can be used to remotely manage and control the sensor nodes in the WSN. For example, it can be used to update the firmware on the nodes, or to configure their sensor parameters.

Remote requester



- ❑ **Data collection:** The gateway can be used to collect data from the sensor nodes in the WSN and transmit it to the internet for analysis and processing. This can be done using a variety of protocols, such as HTTP, MQTT, or CoAP.
- ❑ **Command and control:** The gateway can be used to transmit commands from the internet to the WSN, allowing remote users to control the sensor nodes and collect data on demand.
- ❑ **Alerts and notifications:** The gateway can be used to transmit alerts and notifications from the WSN to the internet in real-time. For example, if a sensor node detects a problem or anomaly, the gateway can transmit an alert to the internet to notify the appropriate parties.

पढ़िए और पढ़ाइये

SUBSCRIBE, SHARE, COMMENT