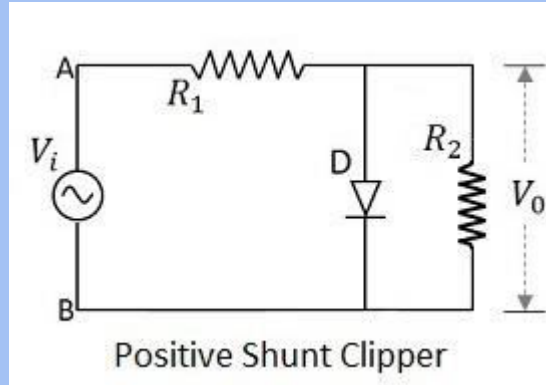


# Shunt Positive Clipper

Elementrix Classes

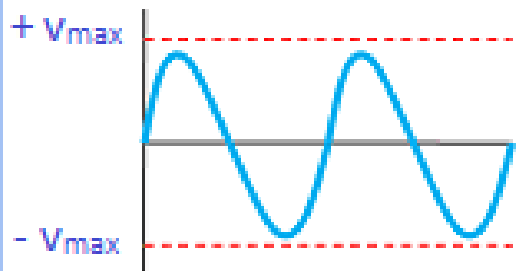
# Shunt Positive Clipper

- ❑ In shunt clipper, the diode is connected in parallel with the output load resistance. The operating principles of the shunt clipper are nearly opposite to the series clipper.

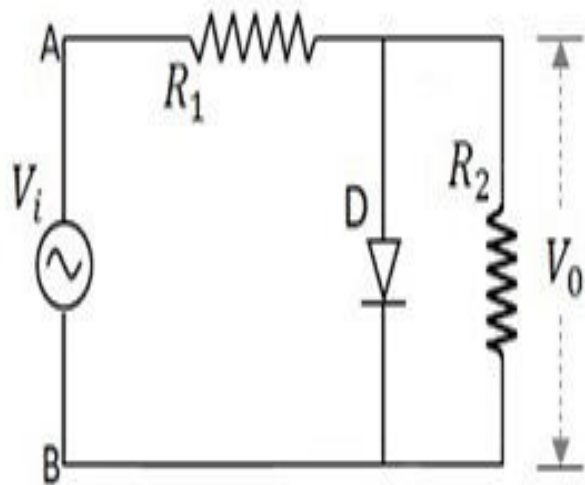


- ❑ The series clipper passes the input signal to the output load when the diode is forward biased and blocks the input signal when the diode is reverse biased.

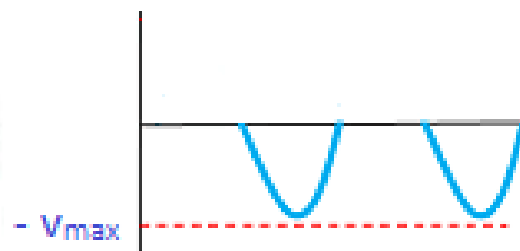
- ❑ The shunt clipper on the other hand passes the input signal to the output load when the diode is reverse biased and blocks the input signal when the diode is forward biased.
- ❑ In shunt positive clipper, **during the positive half cycle** the diode is forward biased and hence no output is generated. On the other hand, **during the negative half cycle** the diode is reverse biased and hence the entire negative half cycle appears at the output.



Input waveform



Shunt positive clipper



Output waveform

पढ़िए और पढ़ाइये

**SUBSCRIBE, SHARE, COMMENT**