

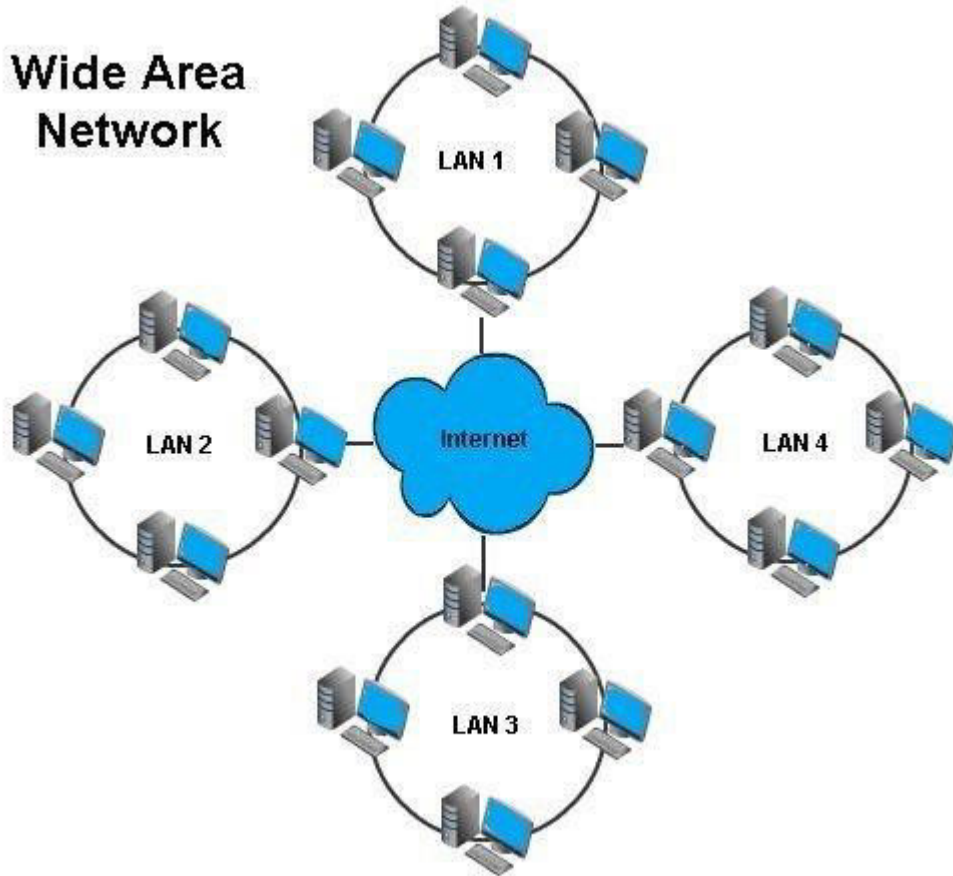
WAN (Wide Area Network)

Elementrix Classes

WAN (Wide Area Network)

- ❑ A Wide Area Network (WAN) is a geographically expansive network spanning large distances, often across states, countries, or even continents.
- ❑ WANs connect multiple smaller networks, like LANs or MANs, to create a vast communication system.

Wide Area Network



Characteristics of WANs:

- ❑ **Extensive Reach:** WANs have the broadest geographic coverage among network types.
- ❑ **Slower Speeds (compared to LANs):** WANs generally have lower data transfer speeds than LANs or MANs, due to the distances involved and the variety of technologies used.

- ❑ **Diverse Technologies:** WANs utilize various technologies for connectivity, including leased lines, fiber optics, satellite links, and cellular networks.
- ❑ **Service Providers:** WANs are often owned and operated by telecommunication companies or service providers, who lease connectivity from them.

पढ़िए और पढ़ाइये

SUBSCRIBE, SHARE, COMMENT